

MONTHLY MEMBERSHIP PROGRESS REPORT

District 110BZ

Results as of: 10/31/2023

GMT:

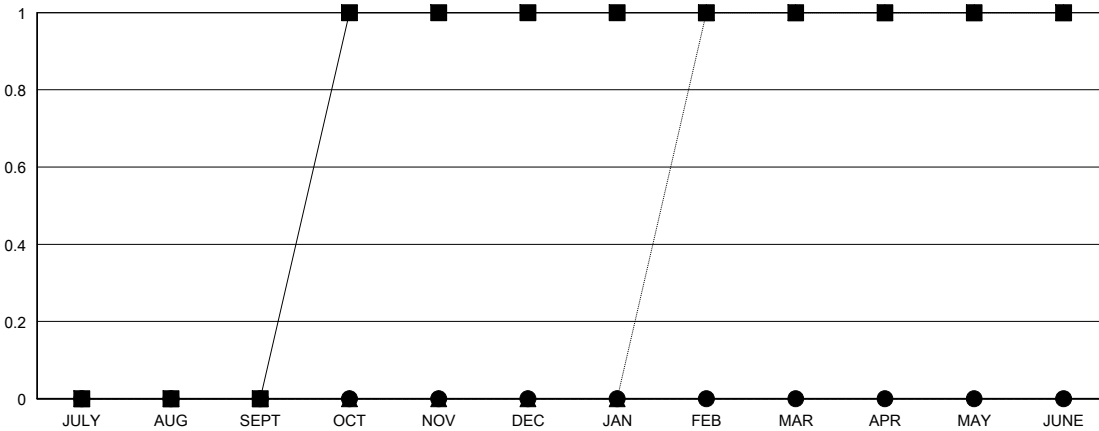
LOCATION NETHERLANDS

GMT CA

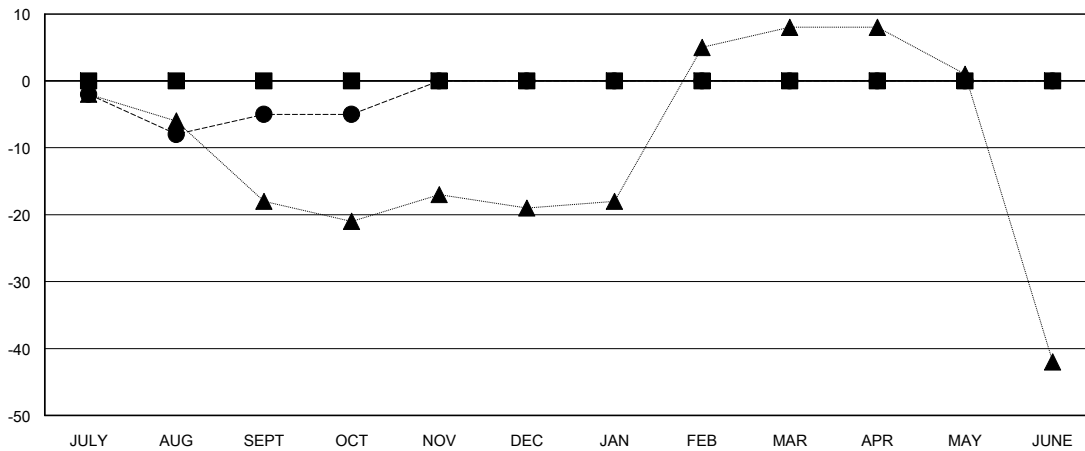
Clubs			
RESULTS FOR 2023-2024			
QUARTER	NEW CLUB GOAL	NEW CLUBS	DROPPED CLUBS
JULY/AUG/SEPT	0	0	0
OCT/NOV/DEC	1	0	0
JAN/FEB/MAR	0	0	0
APR/MAY/JUNE	0	0	0

Members			
RESULTS FOR 2023-2024			
QUARTER	MEMBER GROWTH NET GOAL	MEMBER GROWTH ACTUAL	DROPPED MEMBERS ACTUAL (including transfers)
JULY/AUG/SEPT	0	14	15
OCT/NOV/DEC	0	14	9
JAN/FEB/MAR	0	0	0
APR/MAY/JUNE	0	0	0

GOALS AND ACTUAL NEW CLUBS CUMULATIVE



GOALS AND ACTUAL MEMBERS CUMULATIVE



DROPPED CLUBS: 0	14 CLUBS OF 72 ADDED 1 OR MORE NEW MEMBERS	GENDER DISTRIBUTION
		MALE 1,488 (82.90%)
		FEMALE 307 (17.10%)
DROPPED MEMBERS	CLICK HERE FOR CUMULATIVE MEMBERSHIP DATA	TOTAL FAMILY UNIT MEMBERS 0
DECEASED 3		FAMILY MEMBERS PAYING HALF DUES 0
CLUB CANCELLED 0		
OTHER 21		
TOTAL 24		